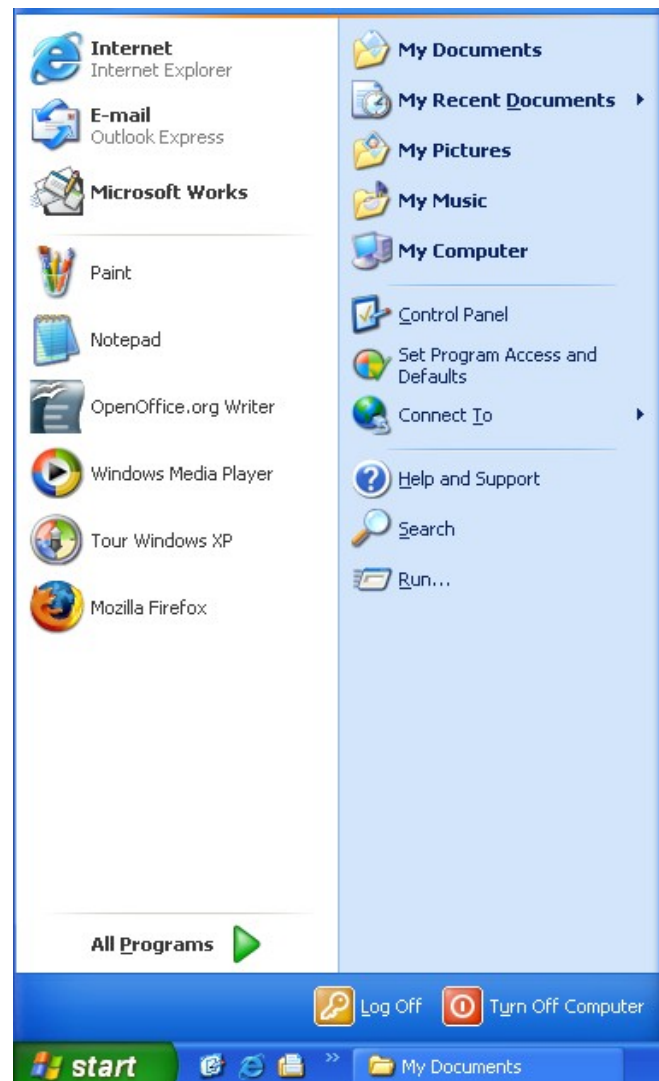


# Turn Off the Computer using the Keyboard (Windows XP)

1. Press the **Windows key**.



This will bring up the **Start Bar**



2. Press the **U key** once to initiate "Turn Off Computer"

**PTO**

3. Press the **U** key again



This will **Turn Off** the computer

4. Your computer will now turn itself off.  
If there are programs still open, these will close first with a Window opening to ask if changes are to be saved, if this is relevant.