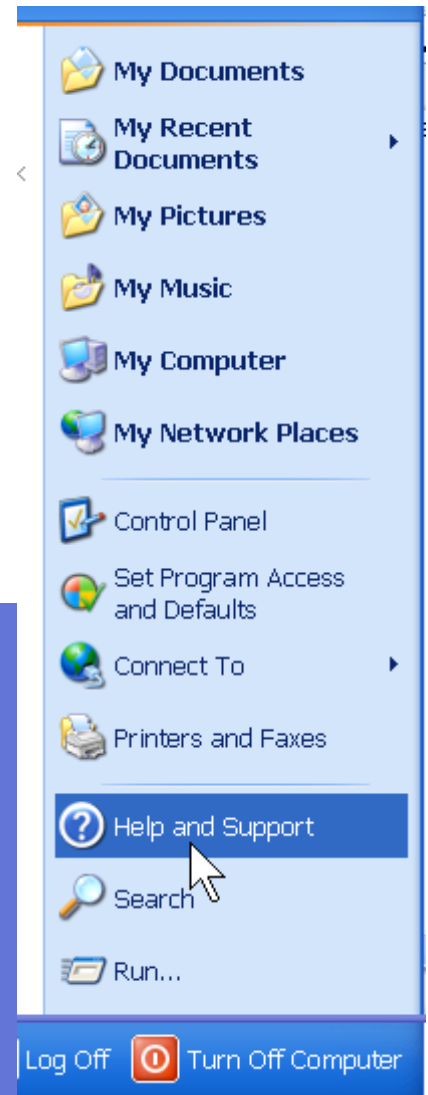


Accessibility Options – Mobility (Windows XP)

1. There are a number of Accessibility Options available within Windows XP to help those with mobility problems. These are to be found in 2 ways.

2. **Either**

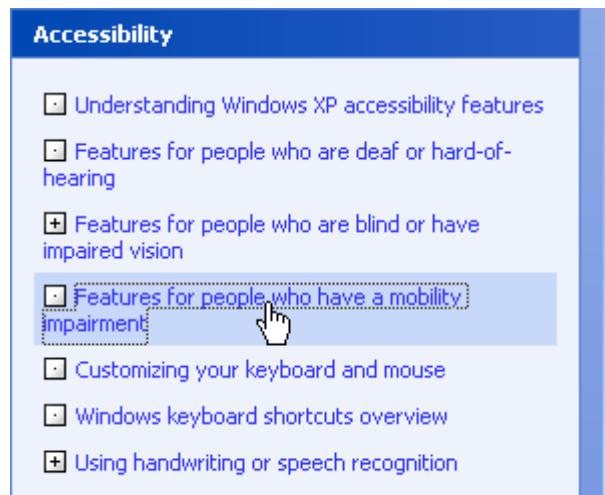
left-click **Help and Support** on the **Start Bar**



and then left-click **Accessibility**

PTO

and then left-click **Features for people who have a mobility impairment** (when it is underlined)



This shows, to the right, a selection of Tasks which allow adapting the computer for various needs.

Pick a task:

[Configuring Windows for people who have a mobility impairment](#)

[Move the mouse pointer using MouseKeys](#)

[Turn on MouseKeys](#)

[Change MouseKeys options](#)

[Turn on Serial Keys](#)

[Display extra keyboard Help in programs](#)

[Turn on FilterKeys](#)

[Change FilterKeys options](#)

[Turn on StickyKeys](#)


[Change StickyKeys options](#)

Configuring Windows for people who have a mobility impairment is an overview of the features available covering the following.

MouseKeys is designed for people who have difficulty using a mouse. **MouseKeys** allows you to use the numeric keypad to control the mouse pointer.

Serial Keys is designed for people who have difficulty using the computer's standard keyboard or mouse. **Serial Keys** provides support so that alternative input devices, such as single switch or puff and sip devices, can be plugged into the computer's serial port.

Filter Keys is a keyboard feature that instructs the keyboard to ignore brief or repeated keystrokes. There are options to select.

Sticky Keys is designed for people who have difficulty holding down two or more keys simultaneously. When a shortcut requires a key combination, such as CTRL+P, **Sticky Keys** will enable you to press a modifier key (CTRL, ALT, or SHIFT), or the Windows logo key () , and have it remain active until another key is pressed.

Display extra keyboard Help in programs. Some software programs provide additional Help for using the keyboard with the program.

On-Screen Keyboard is a utility that displays a virtual keyboard on the screen and allows users with mobility impairments to type data using a pointing device or joystick

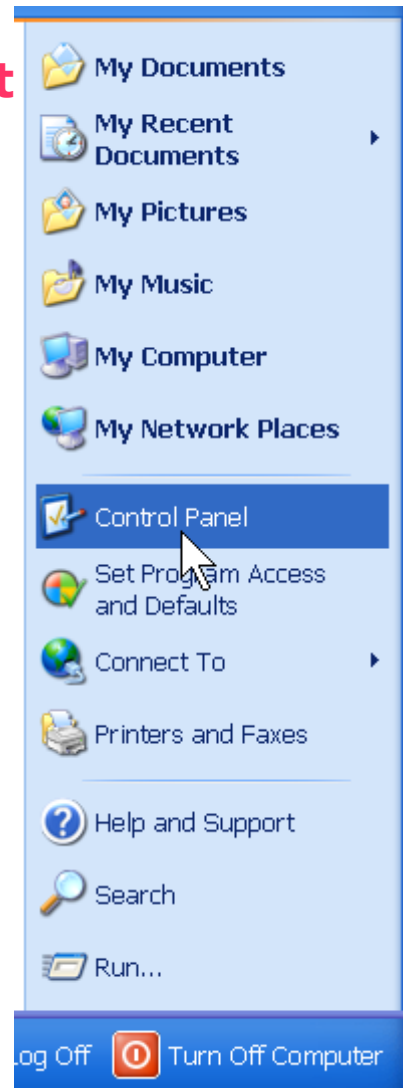
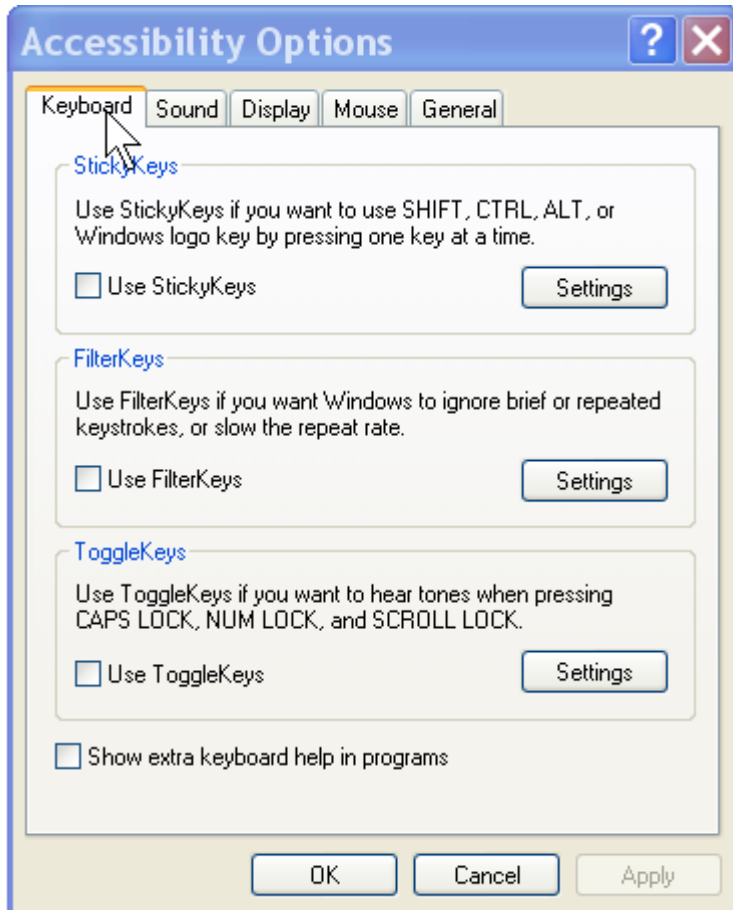
PTO

Or

left-click on **Control Panel** on the **Start Bar**, double click on **Accessibility Options**

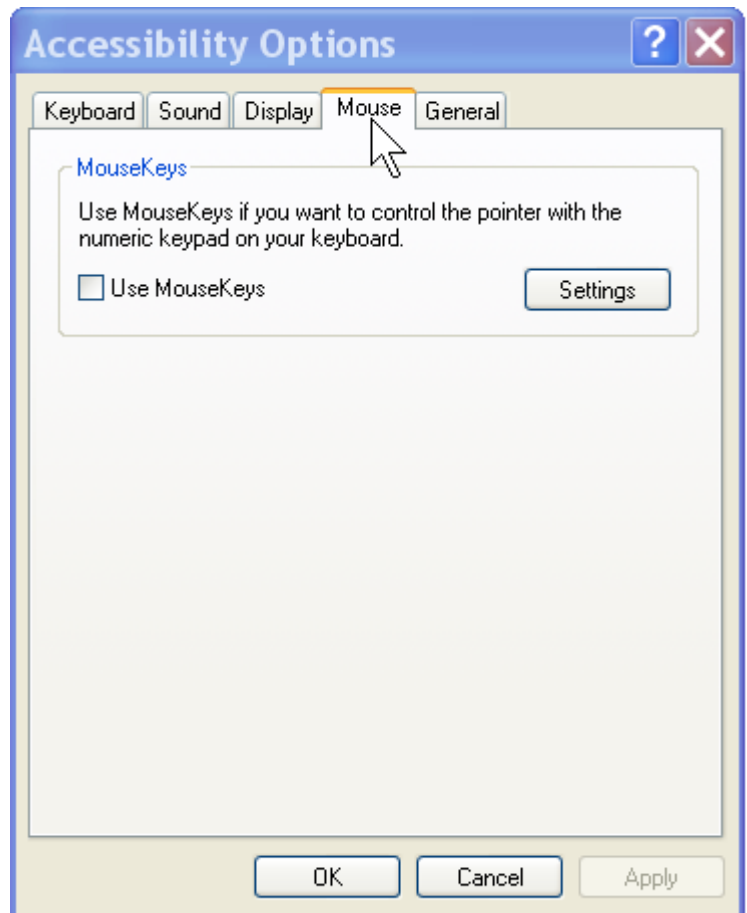


and left-click the **Keyboard** tab.

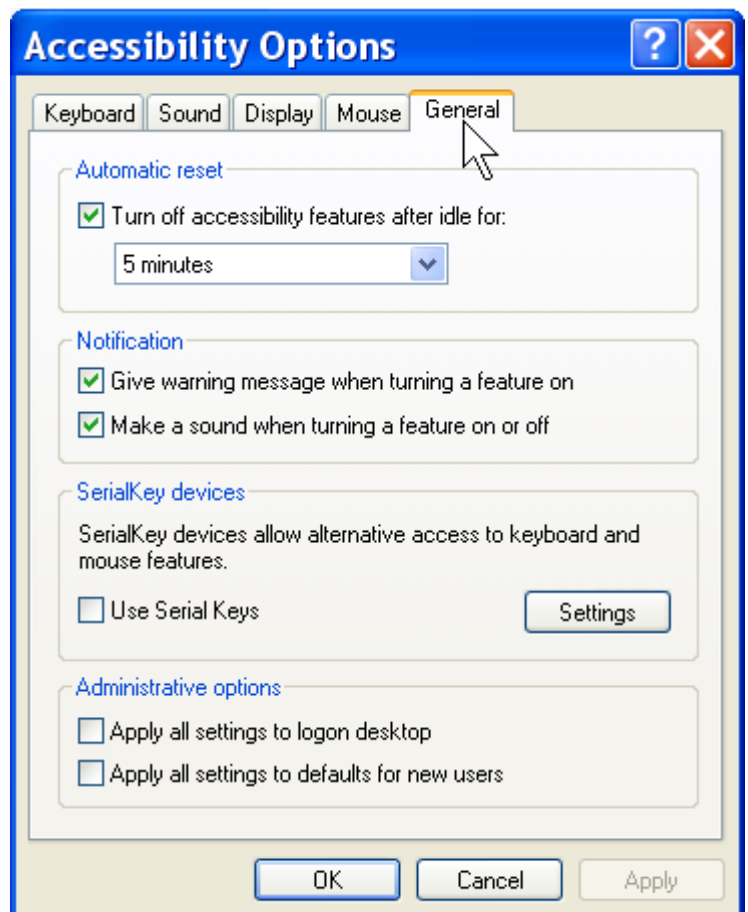


This allows you to choose to use **StickyKeys** and **FilterKeys** by left-clicking the check boxes and Settings and left-clicking on OK.

If you left click the **Mouse** tab this allows you to choose to use **MouseKeys** by left-clicking the check box and Settings and left-clicking on OK.

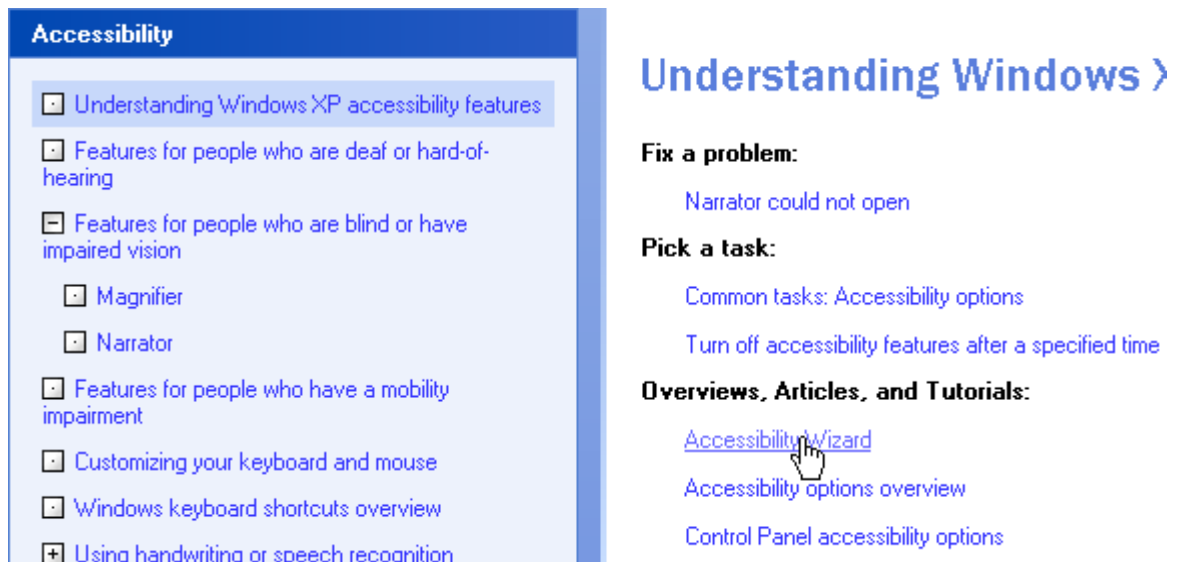


If you left click the **General** tab this allows you to choose to use **SerialKeys** by left-clicking the check box and Settings and left-clicking on OK. There are also other check boxes to set as required.



PTO

3. Choose from the above to meet your particular needs or try the Accessibility Wizard by left-clicking on "Understanding Windows XP accessibility features" and then on "Accessibility Wizard" as shown.



4. There are other forms of Features available for people who have mobility impairment which may be of more use and provide more advanced functionality for daily use. Search the web (eg www.abilitynet.org.uk/myway/) or seek advice from your usual source of help with these and with other Accessibility options to help with mobility problems.