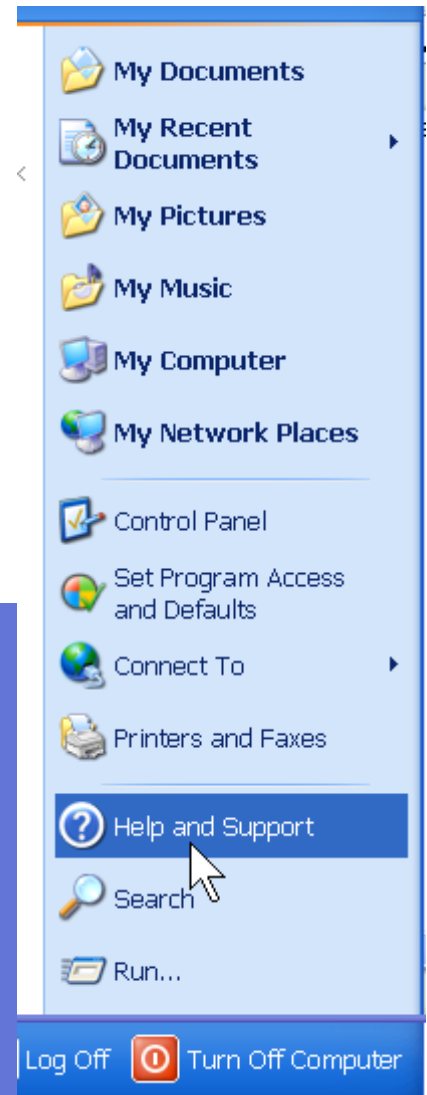


Accessibility Options – Visual (Windows XP)

1. There are a number of Accessibility Options available within Windows XP to help the visually impaired. These are to be found in 2 ways.

2. **Either**

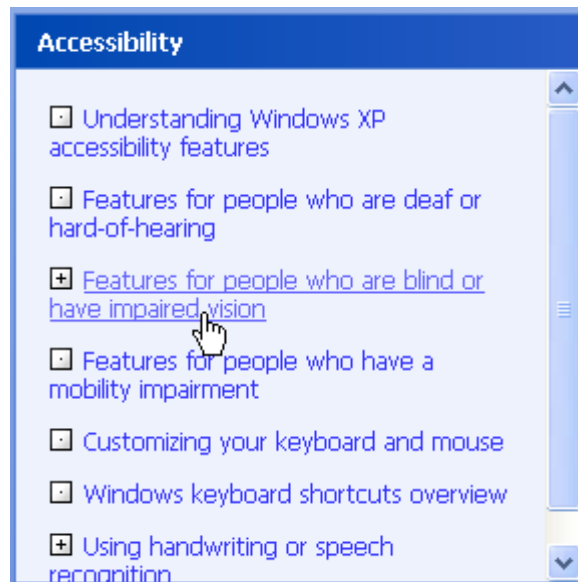
left-click **Help and Support** on the **Start Bar**



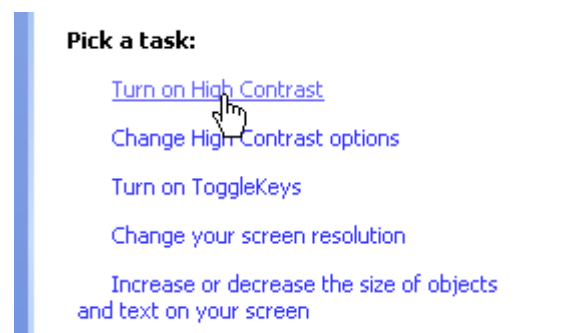
and then left-click **Accessibility**

PTO

and then left-click **Features for people who are blind or have impaired vision** (when it is underlined)



This shows, to the right, a selection of Tasks such as turning on or changing **High Contrast** options, turning on **ToggleKeys**, changing **Screen Resolution**, and changing the **size** of objects or text on the screen.



High Contrast makes the screen easier to view by heightening screen contrast with alternative colour combinations.

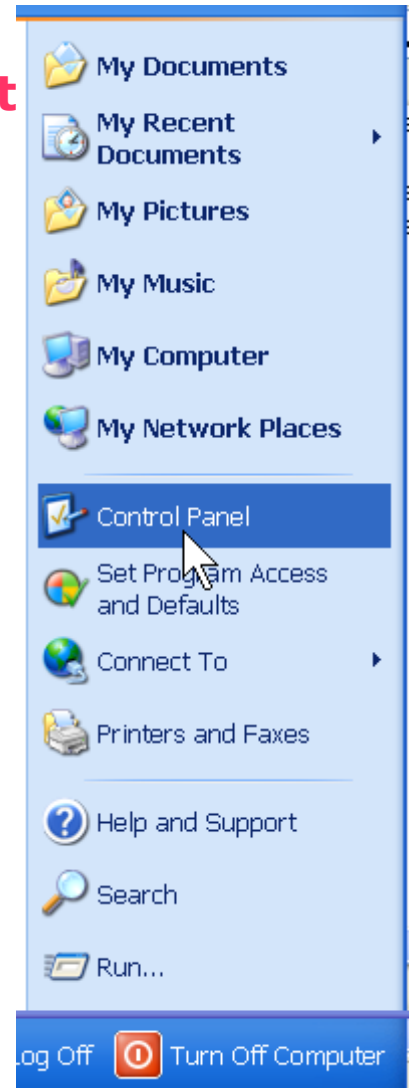
ToggleKeys gives an audible indication when CAPS LOCK, NUM LOCK, or SCROLL LOCK are switched on or off.

Screen Resolution determines the amount of information that appears on the screen. A lower **Screen Resolution** increases the size of items on your screen.

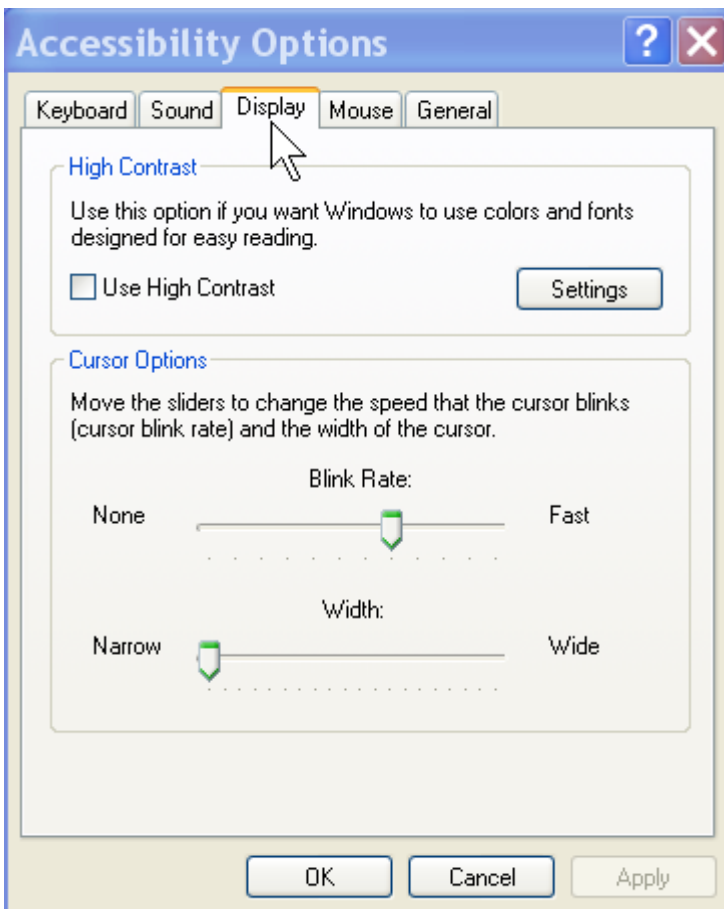
The font **size** can be changed from **Normal** to **Large** or **Extra Large**. Object **size** can be changed as well.

Or

left-click on **Control Panel** on the **Start Bar**, double click on **Accessibility Options**



and left-click the **Display** tab.



This allows setting of **High Contrast** and choosing **Cursor Options** of **Blink Rate** and **Width**.

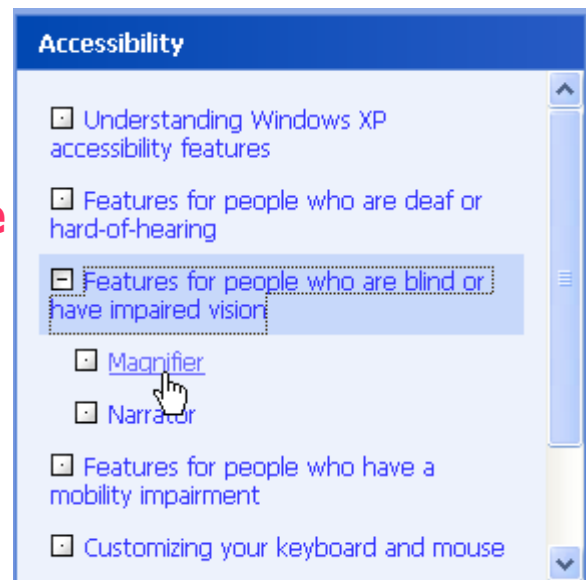
PTO

3. Two further options are available by left-clicking the +

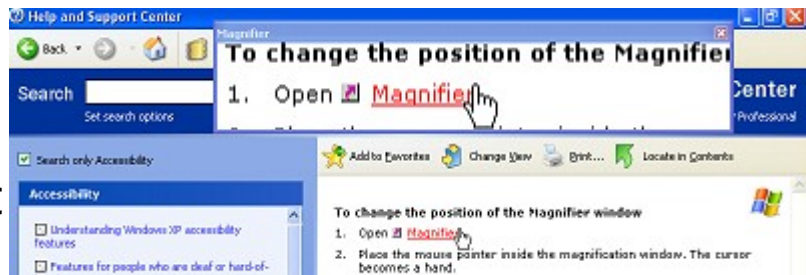


Features for people who are blind or have impaired vision

These options are **Magnifier** and **Narrator**.



Left-click **Magnifier** which gives a list of possible Tasks and follow the links to open **Magnifier** which creates a separate window that displays a magnified portion of your screen.



There are facilities to change the

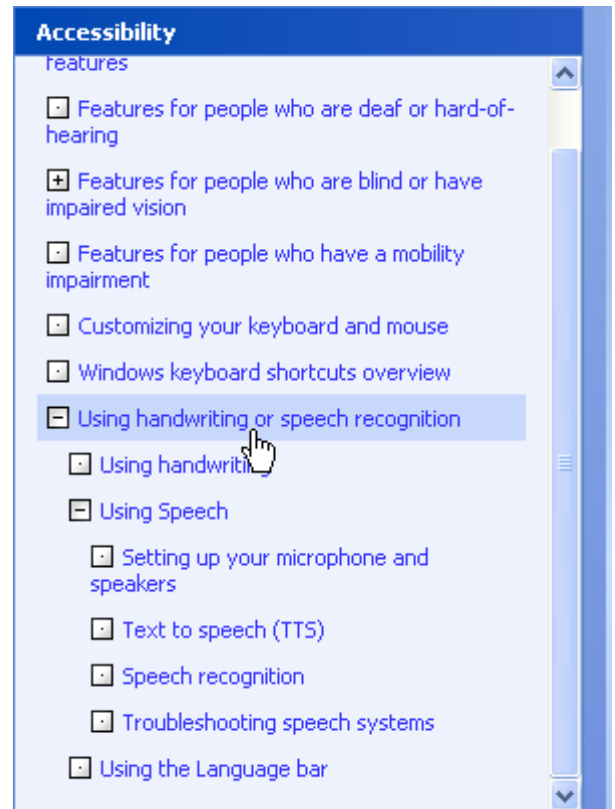
- magnification level
- size of the magnification window
- position of the magnification window on your desktop, and to
- invert the screen colours.

Magnifier also has a number of tracking options, including:

- Following the mouse pointer as it moves on your screen.
- Following the keyboard focus which centres on the location of the cursor.
- Following text editing.

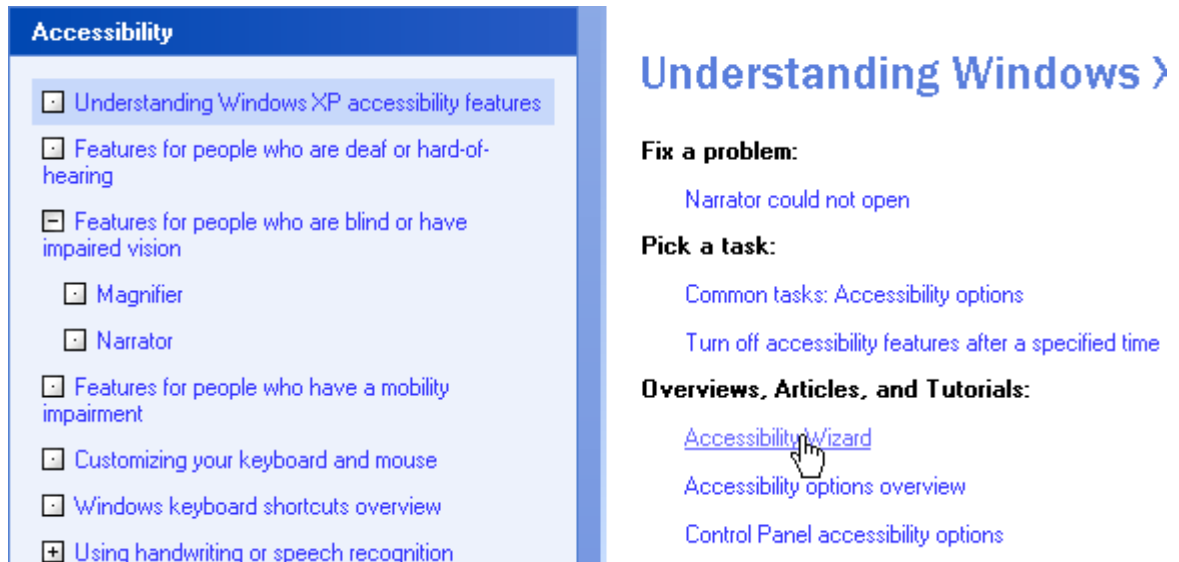
Left-click **Narrator** which gives a list of possible Tasks and follow the links to open **Narrator**, the text-to-speech utility which reads out loud the text displayed on the top Window of the screen and the keystrokes.

4. Further options under Accessibility can be selected as shown.



PTO

5. Choose from the above to meet your particular needs or try the Accessibility Wizard by left-clicking on "Understanding Windows XP accessibility features" and then on "Accessibility Wizard" as shown.



6. There are other forms of text-to-speech utility available which may be more user friendly. Also speech-to-text utilities. Search the web (eg www.abilitynet.org.uk/myway/) or seek advice from your usual source of help with these and with other Accessibility options to help with visual impairment.